

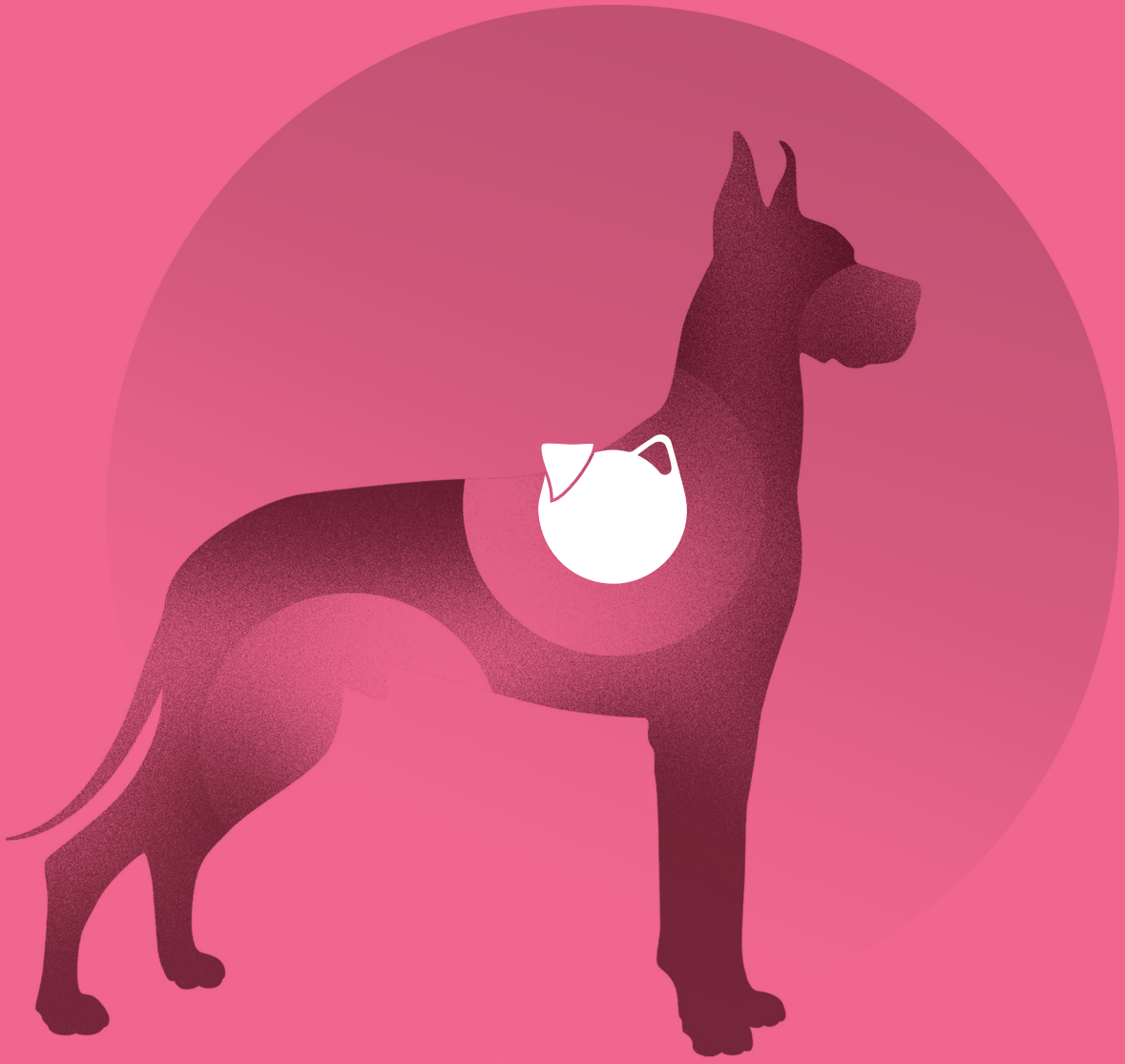


muuua®



for the  of pets & our planet





**Look deep
into nature, &
then you will
understand
everything
better**



About us

With many pet owners now focusing on how sustainable and eco-friendly their pet's supplies are, in addition to key metrics such as comfort, price, and style, we at MuwaNature® decided to evolve the last generation of pet supplies with a holistic, full-cycle approach by focusing on quality and sustainability, and to work on offering pet supplies to both improve our furry friends' lives and our planet's.

MuwaNature® was founded out of our love for pets and the environment. Our mission is simple: to create products and operate our business in a way that honors these founding principles. We believe that with the right shopping philosophy and a commitment to reduce waste, we can help limit our pets' impact on the environment. That is why we feel an obligation to minimize our impact on the planet through responsible manufacturing practices.

We also focus on delivering innovative, functional, trend-inspired clothing for you and your fur-baby. Our creative team is advanced in understanding trends and developing stylish and comfortable clothing for pets and their humans and each piece is meticulously designed and carefully handcrafted in our studio with pets' comfort and safety in mind, yet without compromising on the aesthetics.

Our objective is to improve constantly, think sustainably, and bring awareness to preservation and protection of animals and the environment. We want to make our customers happier, our community stronger, and the future a bit brighter.

UK:
8 Shute Lane, Northstowe, Cambridge,
Cambridgeshire, UK
Tel: +441954261548

TR:
Maslak1453 Residential Complex, Maslak
Neighborhood, Saryer District, Istanbul, Turkey.
Tel: +90212823 07 76







muuuua[®]

CLOTHING

2022-2023



Boho Winter Coat

WSC022

Description:

This Coat is made from high-quality wool to keep your dog warm and look smart.

It comes with a high collar which can fully cover the head and neck of your dog which provide extra warmth and comfort.

With adjustable straps, it is quick and easy to put on your dog. It also comes with a harness hole to let you attach a leash with ease.





Information:

Size: xs - xxl

Colour: Hunter Green/White

Material: 100% polyester

Care & Cleaning: Machine wash

**Exeptional
Quality**



Naughty in Blue Hoodie

WSC009

Description:

For those cool weather days when you and your dog need a little extra insulation, the Naughty in Blue Hoodie is a smart choice! The jumper has two sleeves with ribbed cuff detail for your dog's front legs and a cute hood making it perfect for days when you want to match with your furry friend. The ribbed trim and high-cut tummy of this hoodie give a comfortable fit that can be worn all day. The leash access hole makes walking a breeze!

Information:

Size: xs - xxl

Colour: Blue

Material: 65% quality cotton, 35% polyester

Care & Cleaning: Machine wash



Naughty in Blue Human Hoodie

WSHC009



Pretty in Pink Hoodie

WSC008

Information:

Size: xs - xxl

Colour: Soft Pink

Material: 65% cotton,
35% polyester

Care & Cleaning: Machine wash

Description:

This pink is not for babies! Dusty soft pink for hardcore babes.

The Pretty in Pink Hoodie is a cool, comfy design for a perfect look year-round. Plus, the sweet look makes quite a fashion statement!

This extra cosy hoodie is made from high-quality cotton and super soft fleece inside for warmth. Our unique cut designed for extra comfort fits great on breeds of all shapes and sizes.

It is cropped under the chest so there are no bathroom mishaps. The small stitched opening under the hood allows their favourite lead to easily pass through and fasten to the collar underneath making walkies easy.



Rainbow Raincoat

WSC025



Description:

We have introduced a special new addition to our lineup in honour of Pride Month: the Rainbow Raincoat, a slicker for your furry friend.

This all-weather, three-season raincoat featuring a water-resistant bonded outer shell comes with adjustable straps around the chest and belly, to make it quick and easy to take on and off.

This raincoat is not bulky or overbearing, yet it provides insulation and superior protection from the rain. The sewn-in harness hole at the centre back lets you attach a leash with ease.

Information:

Size: xs - xxl

Colour: White

Material: 100% polyester

Care & Cleaning: Machine wash

Don't put a rain check on your daily walks—keep your dog dry with our Rainbow Raincoat.

This raincoat is perfect for pooches who love everything rainbow pride represents. Show off your puppy pride while turning heads in this fun, bright Rainbow Raincoat!

PRIDE
is a year-round
look!



Fashionista Two-Piece Raincoat/ Sweater

WSC024



Description:

Our beautifully handcrafted two-piece apparel with an emphasis on detail and a quality finish is perfect for a Fashionista in cold weather. This practical design allows each piece to be used alone or together.

For those days that are a little cold, pop the long sleeve sweater alongside the raincoat to keep him/her warm and cosy. The sweater is made with super soft cotton and is buttoned at one side for easy on and off access. Its turtle neck also protects your dog's neck from cold air.





The fabulous gray raincoat comes with all the details and functional features and is a lightweight, fleece lined, shower resistant, soft shell coat. It comes with velcro fastening for easy on/off and a harness opening on the back. Used alone can be perfect for showery walks.

Information:

Size: xs - xxl

Colour: Gray/Indigo

Material: 100% Polyester

Care & Cleaning: Machine wash



Olive Cream Hoodie

WSC007



Information:

Size: xs - xxl

Colour: Olive/Cream

Material: 100% polyester

Care & Cleaning: Machine wash

**Description:**

This pawsome Olive and Cream Hoodie features contrast colour block detailing to make you and your pet stand out from the crowd. The hood can be adjusted by tightening the trendy strings to ensure they stay extra snugly whilst maintaining street-cred! The small stitched opening under the hood allows their favourite lead to easily pass through and fasten to the collar underneath.

It's the perfect addition to your and your pup's winter wardrobe!

Olive Cream Human Hoodie

WSHC007



**Information:**

Size: xs - xxl

Colour: Gray

Material: 94% cotton, 6% elastik

Care & Cleaning: Machine wash

**Description:**

Every pup needs a classic coat as part of their wardrobe to keep them dry and chic. This tailor-made all-weather coat is a breeze to put on with a touch of classicism. It's made of cotton and is very comfortable.

It features a button closure by the belly for easy on/off access and a decorative tie at the front.

Your pal will look his best in this classic coat which is perfect for weddings, anniversaries, parties and formal occasions.

The Classic Pup Trench Coat

WSC017

muuua



muwa

Minimalist Raincoat

WSC023

Description:

This reflective raincoat is perfect for darker showery walks and makes your pup more visible. It is a lightweight, water resistant, soft shell raincoat with a minimalistic design that is especially good for dogs that either don't like the process of putting legs through holes or have fabric bunching up between their front legs. This coat also offers genuine comfort for dogs that like to run unencumbered by buckles, loops, too much fabric, or restrictive designs.

It has an adjustable long collar, an opening for your dog's lead under flap on the back, and a belly strap for a perfect fit.

Information:

Size: xs - xxl

Colour: Black

Material: 100% pes

Care & Cleaning: Machine wash





Blizzard Puffer Jacket

WSC014

Description:

Made with a 100% waterproof polyester exterior, this coat is perfect for keeping your dog warm and dry in all types of outdoor adventures. Lined with thick fleece and filled with warm fibre insulation, our puffer coat is perfect for any type of cold weather and your pup will be ready to take on the trail ahead. It has a wide neck opening with buttons to allow you to pull over your doggy's head with ease and the addition of buttons at your furbaby's neck makes this jacket oh-so-stylish.

It is specifically designed for dogs of all sizes. With an easy slip over the head and a snap of the adjustable strap over the back, the puffer coat can fit dogs of all shapes and sizes. The vest-style design allows for more flexible movement while still providing your dog with coverage and cosiness.

The dog harness/leash hole at the back is very suitable for cold-weather walking, hiking or other outdoor activities.





Extra thick high collar

%100 waterproof

Adjustable belly strap



Information:

Size: xs - xxl

Colour: Black

Material: 100% polyester

Care & Cleaning: Machine wash



A photograph of a dog, possibly a Weimaraner, wearing a dark, short-sleeved raincoat. The dog is standing on its hind legs, looking up at a person's hand that is holding its snout. The background is a plain, light color.

Clean Civilian Raincoat

WSC013

Information:

Size: xs - xxl

Colour: Black

Material: 100% polyester

Care & Cleaning: Machine wash

**Description:**

Whether you want to keep your dog dry during rainy seasons or you'd like to give Fido something stylish to wear then stay warm and trendy with our Clean Civilian Raincoat.

It has a double-layered design with button closure that ensures a smooth on/off experience. It is completely water resistant and will keep your dog safe and dry in all weather conditions. It comes with pockets for easy storage of small items. It also contains a small opening on the upper back of the rain jacket for harness users.

Keep your pup warm, dry and super stylish in this black raincoat with a fleece lining.



Walkster Jumpsuit

WSC005



Information:

Size: xs - xxl

Colour: Hunter Green

Material: 100% polyester

Care & Cleaning: Machine wash

Description:

Our Walkster Jumpsuit made of polar fleece provides the maximum effect in terms of warmth, comfort and protection from the elements. Made to the highest levels of quality and attention to detail, it has been proven to work time and again. This full-body jumpsuit is easy to put on your dog and covers the majority of the dog's body. It does not restrict the dog in any way from performing natural bodily functions.

The neck area is adjustable which makes it easy for you to find a position that fits your dog most. Its thick and soft collar has an adjustment around the neck and provides additional weather protection when the wind kicks up.





muwa

Explorer Two-Piece Jacket

WSC015



Information:

Size: xs - xxl

Colour: Pistachio/Black

Material: Polyester/Polar

Care & Cleaning: Machine wash

Description:

When the cold weather hits, make sure your dog isn't shivering and stays warm and dry with our two-piece soft and comfortable Explorer Jacket. The pistachio rain jacket is made of 100% polyester to keep moisture out like freezing rain or snow, and the black polar vest helps to keep warm air in, so your dog always stays warm and dry. This outfit is safe, durable, and made to last and is perfect for your lovely pet's daily wearing.

This two-piece jacket is designed for coping with different weather; When it's rainy but not cold, your puppy can only wear the pistachio rain jacket to go for a walk. When the weather gets a little bit cold, it's time to put on the black sweater vest. The black polar vest also works alone when there's just a hint of a chill in the air.



The Flashy Human Trenchcoat

WSHC001



The Flashy Trenchcoat

WSC001



Information:

Size: xs - xxl

Colour: Black

Material: 100% polyester

Care & Cleaning: Machine wash

Description:

The epitome of style, these classy dog and human waterproof trenchcoats should be in every fashion-conscious's closet.

Our premium double-pocketed trenchcoat is made of a luxurious-looking polyester with a fleece lining. It is made of a quality water-repellent fabric and can be done up using front-fastening poppers.

It comes with two adorable pockets at back, designed with buckles, which can hold small items, such as snacks, keys or litter bags. The adjustable waist (with elastic drawcord) and straps with adjusters on sleeves assure a perfect fit. It also features a snap button closure in front for easy on/off access and a leash slit holder behind the neck area for easy wear and walks.

It will remind you of the one you might have worn to a holiday event, a fancy brunch, or the theatre. It's even reminiscent of a classic caroler's coat.



Windrunner Puffer

WSC016



Adjustable
belly strap

Adjustable straps
by every leg

Extra thick
long collar

Information:

Size: xs - xxl

Colour: Yellow/Cream

Material: 100% polyester

Care & Cleaning: Machine wash

Description:

Our full-body Windrunner Puffer Jumpsuit is inner-lined with a high-quality fleece lining. It is lightweight, waterproof, windproof, snowproof, and breathable. The outer shell is made from polyester and fits comfortably around your dog without restricting movement. The interior features a thick layer of warm and soft polar fleece which is extremely breathable and offers fantastic warmth and comfort. It features adjustable straps by every leg and the belly for a perfect fit. Its long snood provides more warmth and can also be used as a hood. It also offers a leash slit above the neck area.

Keep your pooch cosy, dry, and warm on walks on chiller and drizzling rainy days with our Windrunner Puffer!



Sherlock Hound Trenchcoat

WSC002

Information:

Size: xs - xxl

Colour: Beige

Material: 100% polyester

Care & Cleaning: Machine wash



Description:

It's elementary my dear Watson, this costume is absolutely astounding. This is the classic look of the traditional spy man coat. So get ready for some sleuthing, the game is afoot.

The Sherlock Trenchcoat, detailed with a designer hood, is the ultimate dog and human fashion item for those who want to be both stylish and protected and stroll through the city.

This luxury coat is 100% water and dirt-repellent and will protect you from mild weather conditions. The high-quality fabric makes it comfortable to wear while the button closure in front allows convenient on/off access.

Enjoy a special moment and memorable day with our tailor-made coat for yourself and your furry buddy. You will be warm in this delicate and tasteful designer look.



Sherlock Human Trenchcoat

WSHC002



muua

Plain Pet Hoodie

WSC010

Information:

Size: xs - xxl

Colour: Charcoal

Material: 65% cotton, 35% polyester

Care & Cleaning: Machine Wash

Description:

Keep your partner feeling warm during cold weather walks while looking cool with this eco-friendly cotton blend hoodie that is made with recycled materials. Styled like a human tactical pullover hoodie, it features an easy-on pullover design with added half buttons at the front to help go over your dog's head smoothly.

Your furry pal deserves to enjoy the comfort of this hoodie on brisk days. It is machine washable for easy care, features a cool charcoal colour, and has a hood to protect your dog's ears from chilly drafts.

Add an eco-friendly touch to your pal's wardrobe and provide ultimate comfort and warmth for them.



Description:

Dogs will love to be warm and out in our Chill Hunter jumpsuit!

It is made of high-quality staple fibre which is water resistant, soft, warm, breathable, and comfortable for your dog to wear and keeps your dog warm and protected against cooler temps.

It is designed in a 4-leg style and a long turtleneck that offers extra protection and keeps your dog's head and legs warm and comfy in nippy weather. The pullover design makes it easy to put on and take off. And because dogs are always on the move, the overall is specifically designed

not to restrict their natural movement. The neck area is fitted with adjustable elastic straps, which can be adjusted to fit the size of your dog for greater warmth and convenience.

Make your little friend feel snug as a bug in a rug in winter with this overall.

Information:

Size: xs - xxl

Colour: Khaki

Material: 100% polyester (staple fiber)

Care & Cleaning: Machine wash



Chill Hunter Jumpsuit

WSHC003

Chill Hunter
keeps the
the cold out
better than a
fireplace!



muwa®

Adventure Tracker Raincoat

WSC002



muwa

Information:

Size: xs - xxl

Colour: Gray

Material: 100% polyester

Care & Cleaning: Machine wash

**Description:**

Our fabulous Adventure Tracker full-bodied raincoat is 100% Waterproof and wind-proof. The exterior shell is specially engineered with complete breathability in mind and is lined with cosy and soft fleece lining. It allows dynamic freedom of movement for running, playing, and jumping without overheating. You can easily detach or re-attach the raincoat hood so that whatever the weather this winter, your furry loved ones will always be protected.

Additionally, this raincoat features special banding by every sleeve for a more uniform and customizable fit that conforms to the body while offering expansion for added growth while preventing water from entering.

Wherever you go adventuring together, you can make sure your best friend is snug and the coolest-looking pooch in the park!



Information:

Size: xs - xxl

Colour: Brown

Material: 100% polyester

Care & Cleaning: Machine wash

Description:

This brown corduroy vest has a soft outer shell and a soft fleece lining to keep your pet super warm during those blustery autumn/winter days. It is designed with a front snap buttons closure that makes it easy to put on, so getting ready is hassle-free.

Cotton corduroy is such an inviting texture. It's cosy, yet breathable and machine washable!

Its unique and beautiful appearance makes it suitable for all occasions, such as parties, daily wear, walking and so on. It can let them become attractive and become the superstars of dogs.

Comfy and chic, the Tan Corduroy Jacket is the perfect addition to any winter wardrobe.



Cowboy Vest

WSC006



Hawaiian Shirt

WSC020

Description:

Our Hawaiian shirt is fabulously stylish for your dapper dog! Constructed of soft and breathable classic cotton with embroidered graphics, it is sure to make a statement! The palm trees give the shirt a summer Hawaiian beach vibe. The perfect easy fashion staple for the discerning dog, it's comfortable to wear and is designed to provide an easy-to-dress fit with touch fastener closures on the belly. The high-cut stay-dry belly keeps pups looking good while they're out on the move.

Take your lovely pet for a holiday! Feel the summer atmosphere, play by the sea, live a relaxed life and let your pet also have a Hawaiian shirt belonging to it.

Information:

Size: xs - xxl

Colour: White

Material: 100% cotton

Care & Cleaning: Machine wash





muuta

Hawaiian Dress

WSC021





Information:

Size: xs - xxl

Colour: White

Material: 100% cotton

Care & Cleaning: Machine wash

Description:

Whether you're going for a walk around the block or on an exotic trip, this pretty Hawaiian dress is sure to make your doggy even more adorable. The embroidered palm trees give the dress a summer Hawaiian beach vibe.

This breezy 100% cotton dress, accented with a pleated skirt, will turn heads and keep your pup comfy. Your pup will feel like they're on vacation with its easy-to-apply style with touch fastener closure at the neck and chest for easy on/off and an adjustable fit. The open bottom will keep your pup, clean, cool and dry.

Light up your summer parties and put your pup in a holiday mood with the Hawaiian dress!



**Information:**

Size: xs - xxl

Colour: White dove/Cornflower

Material: 50% cotton, 50% polyester

Care & Cleaning: Machine wash

**Description:**

This superb blue summer dress is simply adorable and so beautifully made. It is comfortable and very good-looking, just perfect for all occasions. This design with its pleated hem and cute decorative collar makes your pet look more lively and stylish.

Made of a smooth fabric, soft to the touch, it looks very classy and won't irritate your pet's skin.

The button closure makes it easy to put on and take off, and its high belly cut makes it easier for the puppies for potty breaks and it gives your pet a comfortable wearing experience.



Blue Waves Dress

WSHC018



Little Princess Dress

WSC019



**Description:**

Take a trip to paradise with your Little Princess in this stylish summer dress.

This classic look is retro-inspired and perfect for parties any time of year. It features puffed satin sleeves and skirt and is fully lined for an elegant look.

This adorable dress is a breeze to put on and take off with the button closure in front.

Get ready to shimmer and shine with this festive party frock, because your tiny princess deserves to look great, unique and even a little royal!

Information:

Size: xs - xxl

Colour: White dove/Green

Material: 55% cotton, 45% polyester

Care & Cleaning: Machine wash



Black Flower Dress

WSC011

Information:

Size: xs - xxl

Colour: Black

Material: 100% polyester

Care & Cleaning: Machine wash



Description:

The Black Flower Dress is a cool, comfy design for a perfect look year-round. This sleeveless dress is great on its own or can be the foundation of an entire outfit.

It features a cute pleated skirt with a high-cut belly. It is a comfortable pull-over style that allows an easy on/off experience. The sleeveless style won't impair your pup's movement and the simple style won't detract from your dog's natural good looks.

A classic and simple style for your furry friend!





muwa

Cowboy Bandana

WSS001-1



Information:

Product Size: S, M, L

Colour: Brown

Material: 50% acrylic, 45% polyester, 5% cotton

Description:

Our handmade Cowboy Corduroy Bandana is a beautiful addition to your pup's wardrobe. The corduroy is thick, yet buttery soft.

It includes a set of snap buttons to allow for a perfect and easy fit. It is made out of high-quality materials and stitched carefully making sure they are not only beautiful but long-lasting too!

Royal Gray Bandana

WSS001-2



Information:

Product Size: S, M, L

Colour: Koala Gray

Material: 90% polyester, 10% cotton

Description:

Our Royal Gray Bandana will become a must for your dog! The bandana will give him/her an elegant air while remaining comfortable.

It includes a set of snap buttons to allow for a perfect and easy fit. It is made out of high-quality materials and stitched carefully making sure they are not only beautiful but long-lasting too!



Classy Dog Bandana

WSS001-3



Information:

Product Size: S, M, L

Colour: Tan

Material: 50% acrylic, 45% polyester, 5% cotton

Description:

Our handmade snap-on Classy Dog bandana is perfect for any dog who aims for a sophisticated look and is a great addition to your furry friend's wardrobe!

It includes a set of snap buttons to allow for a perfect and easy fit. It is made out of high-quality materials and stitched carefully making sure they are not only beautiful but long-lasting too!

Sailor Dog Bandana

WSS002-1

WSS002-2

Information:

Product Size: S, M, L

Colour: Navy/White

Material: 100% cotton

Description:

Featuring a pattern of anchors on blue and white background, this cute pet bandana is a pawsome way for your dog to share the woofing love!

It includes a set of snap buttons to allow for a perfect and easy fit. It is made out of high-quality cotton and stitched carefully making sure they are not only beautiful but long-lasting too!





muwa[®]



muwa[®]

Size Information

Size	Back - A (cm)	Chest - B (cm)	Neck - C (cm)
1	28-30	32-40	32-34
2	30-34	40-45	34-36
3	34-38	45-50	36-38
4	38-42	50-55	38-40
5	42-46	55-60	40-42
6	46-50	60-66	42-45
7	50-54	66-72	45-48
8	54-58	72-78	48-51
9	58-62	78-84	51-54
10	62-66	84-91	54-58
11	66-70	91-98	58-62
12	70-74	98-105	62-66

